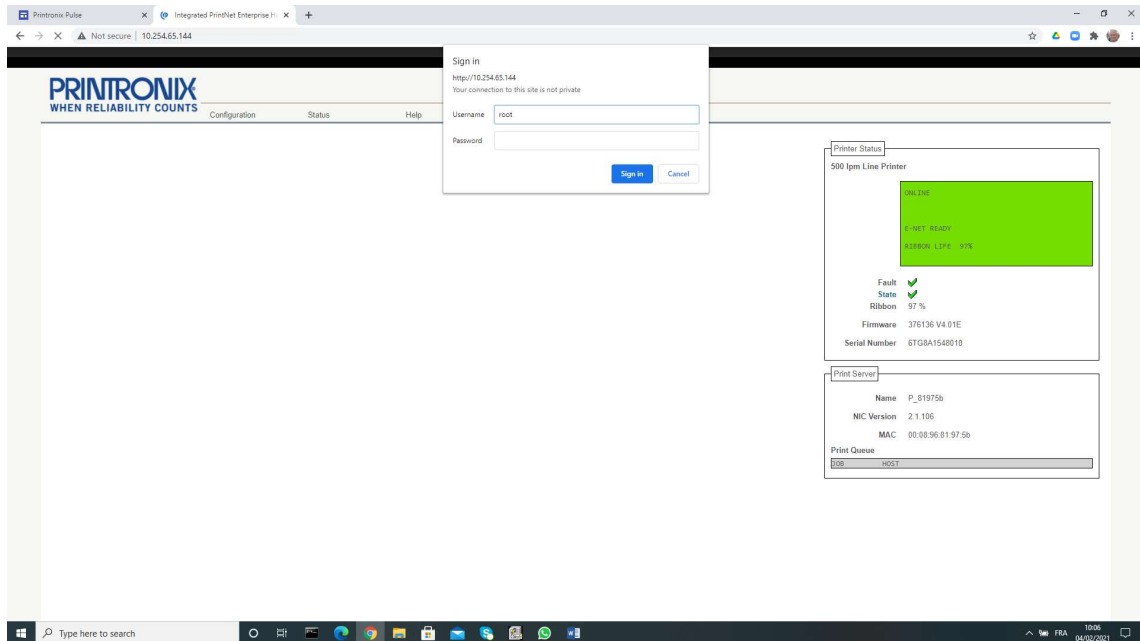
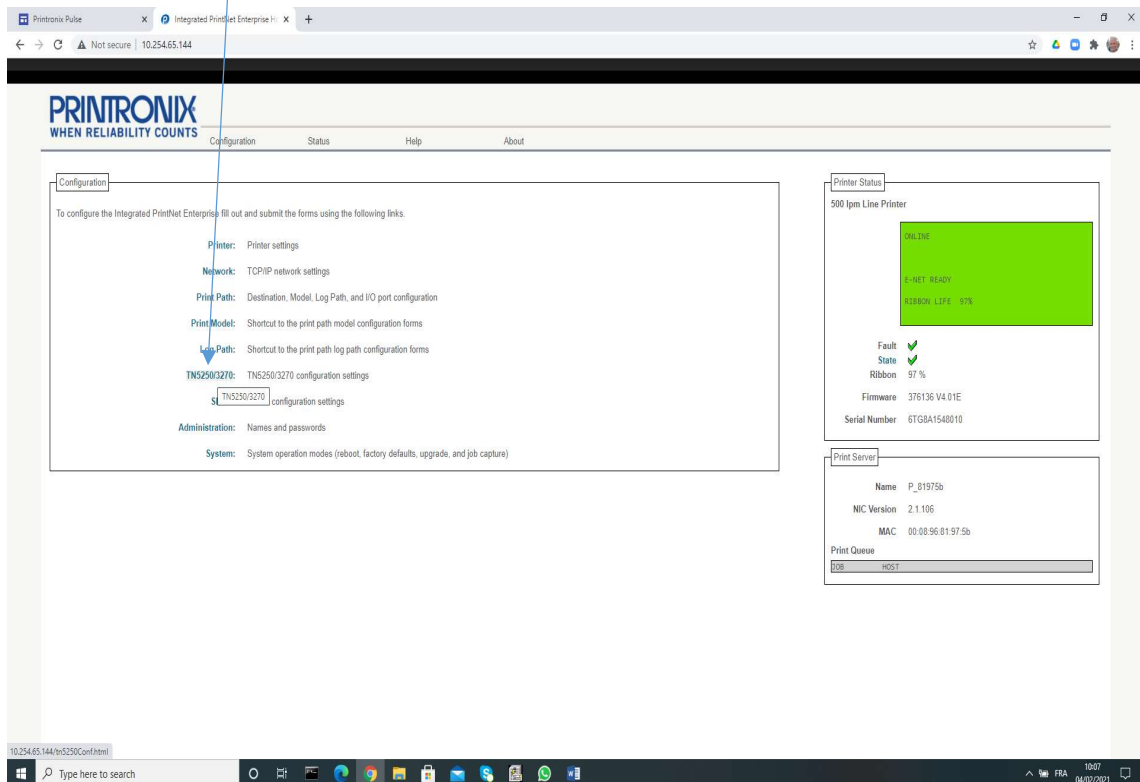


How to configure P8000 with TN5250 emulation

Open the browser and type printer IP address. User is root and no password then ok



Click on TN5250\TN3270



Type AS400 IP address then Printer Name then *none and click on Auto Connect then SUBMIT

Configuration for Print Path d1pm

NOTE: Changes will only take effect after you reset the Integrated PrintNet Enterprise from the System page.

Mode: TN5250 (Switch to TN3270 mode)
Host: 10.254.39.2 (ok)
Port: 23
Device Description: PR181N
Message Queue Name: QSYSOPR
Message Queue Library: *ABC
Device type: IBM
WSCST Name: *none
WSCST Library: *ABC
Auto Connect:
Start Auto Connect: [Click here](#)

Submit Clear Form

Printer Status
500 lpm Line Printer
ONLINE
E-NET READY
RIBBON LIFE 97%
Fault
State
Ribbon 97%
Firmware: 376136 V4.01E
Serial Number: 6TGBA1548010

Print Server
Name: P_81975b
NIC Version: 2.1.106
MAC: 00:08:96:81:97:5b
Print Queue
DOB: HOST

Click on REBOOT and device will be created on the AS400

System

NOTE: 'Reboot' and 'Default' will immediately shut down all services on the Integrated PrintNet Enterprise and reset the unit.

Reboot This will reboot the printer.
Default This will reset the Integrated PrintNet Enterprise to factory default settings and reboot the printer.
Upgrade This will upgrade the printer's firmware.

Job Captures

Start Job Capture This will start the job capture into 256 KB of memory.
Upload This will upload the job capture data to a file.

Printer Status
500 lpm Line Printer
ONLINE
E-NET READY
RIBBON LIFE 97%
Fault
State
Ribbon 97%
Firmware: 376136 V4.01E
Serial Number: 6TGBA1548010

Print Server
Name: P_81975b
NIC Version: 2.1.106
MAC: 00:08:96:81:97:5b
Print Queue
DOB: HOST

AS400 Printer Device Status (Active) and Spooler (Started)

```

IBM 5250 Terminal
File Edit Connection Setup Macro Window Help
Work with Configuration Status
S652003A
02/04/21 10:23:39
Position to . . . . . Starting characters
Type options, press Enter
1=Vary on 2=Vary off 5=Work with job 6=Work with description
9=Display mode status 13=Work with APPN status...

Opt Description Status -----Job-----
--- PRTROBERT VARIED ON
--- PRT01 VARIED OFF
--- PRT8SNMP ACTIVE/WRITER PRT8SNMP QSPLJOB 412867
--- PRT8TN ACTIVE/WRITER PRT8TN QSPLJOB 446149
--- PRT809 VARY ON PENDING

Bottom
Parameters or command
====>
F3=Exit F4=Prompt F12=Cancel F23=More options F24=More keys

1 >> 11/29
IBM 5250 Terminal - 10.254.39.2 via Telnet NUM
    
```

```

IBM 5250 Terminal
File Edit Connection Setup Macro Window Help
Work with All Printers
Type options, press Enter
1=Start 2=Change 3=Hold 4=End 5=Work with 6=Release
7=Display messages 8=Work with output queue

Opt Device Sts Sep Form Type File User User Data
--- PRT01 END
--- PRT8SNMP STR *FILE *ALL
--- PRT8TN STR *FILE *ALL
--- PRT809 END
--- P5IPDSCSC END
--- P5000 END
--- P5000AFP END
--- P5000SCS END
--- P7IP246 END
--- P8IRV73 END
--- P8SNMP END

More...
Parameters for options 1, 2, 3, 4, 6 or command
====>
F3=Exit F11=View 2 F12=Cancel F17=Top F18=Bottom F24=More keys

1 >> 8/3
IBM 5250 Terminal - 10.254.39.2 via Telnet NUM
    
```